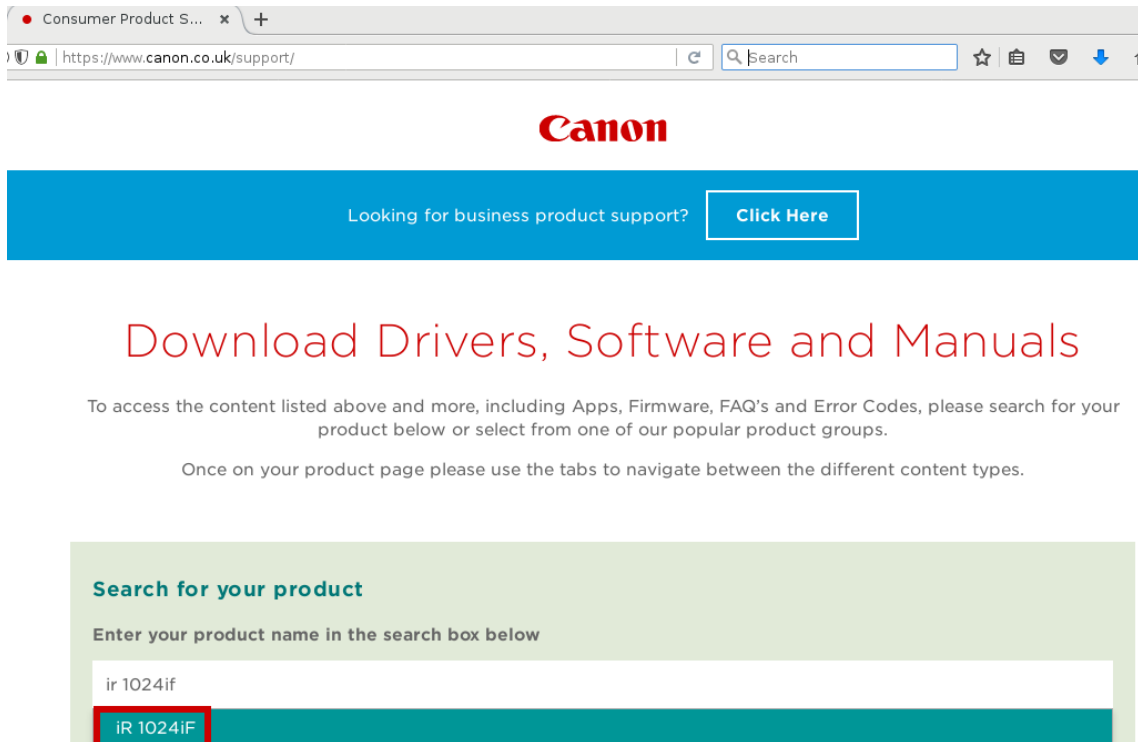


Tutorial de instalação da impressora Canon IR 1025iF no Sistema Operacional Mac OSX

Faça download do driver mais recente no site da Canon: <https://www.canon.co.uk/support/>

Procurar por: ir 1024if



Consumer Product S... x +

https://www.canon.co.uk/support/

Canon

Looking for business product support? [Click Here](#)

Download Drivers, Software and Manuals

To access the content listed above and more, including Apps, Firmware, FAQ's and Error Codes, please search for your product below or select from one of our popular product groups.

Once on your product page please use the tabs to navigate between the different content types.

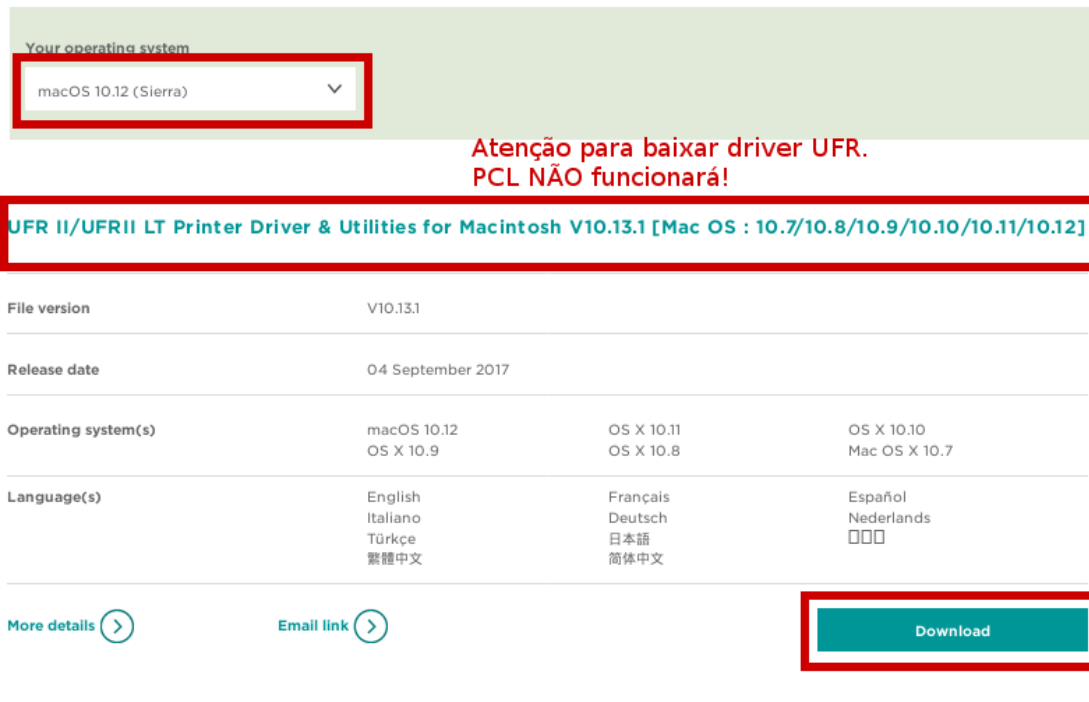
Search for your product

Enter your product name in the search box below

ir 1024if

iR 1024iF

Escolha o sistema operacional e faça download do driver UFR II Printer Driver.



Your operating system

macOS 10.12 (Sierra) ▼

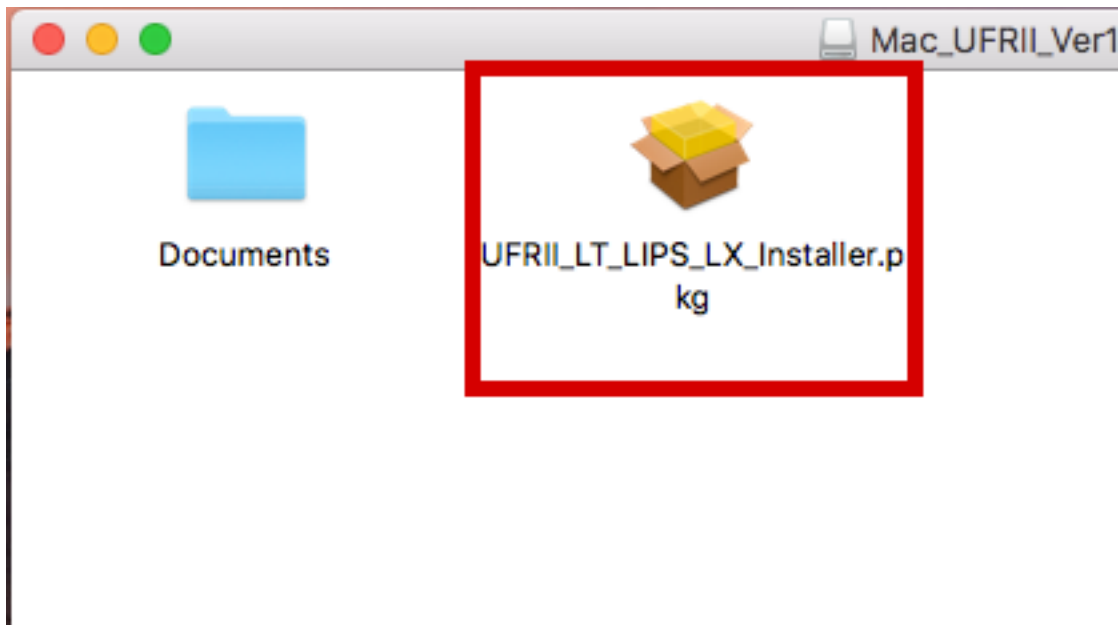
**Atenção para baixar driver UFR.
PCL NÃO funcionará!**

UFR II/UFR II LT Printer Driver & Utilities for Macintosh V10.13.1 [Mac OS : 10.7/10.8/10.9/10.10/10.11/10.12]

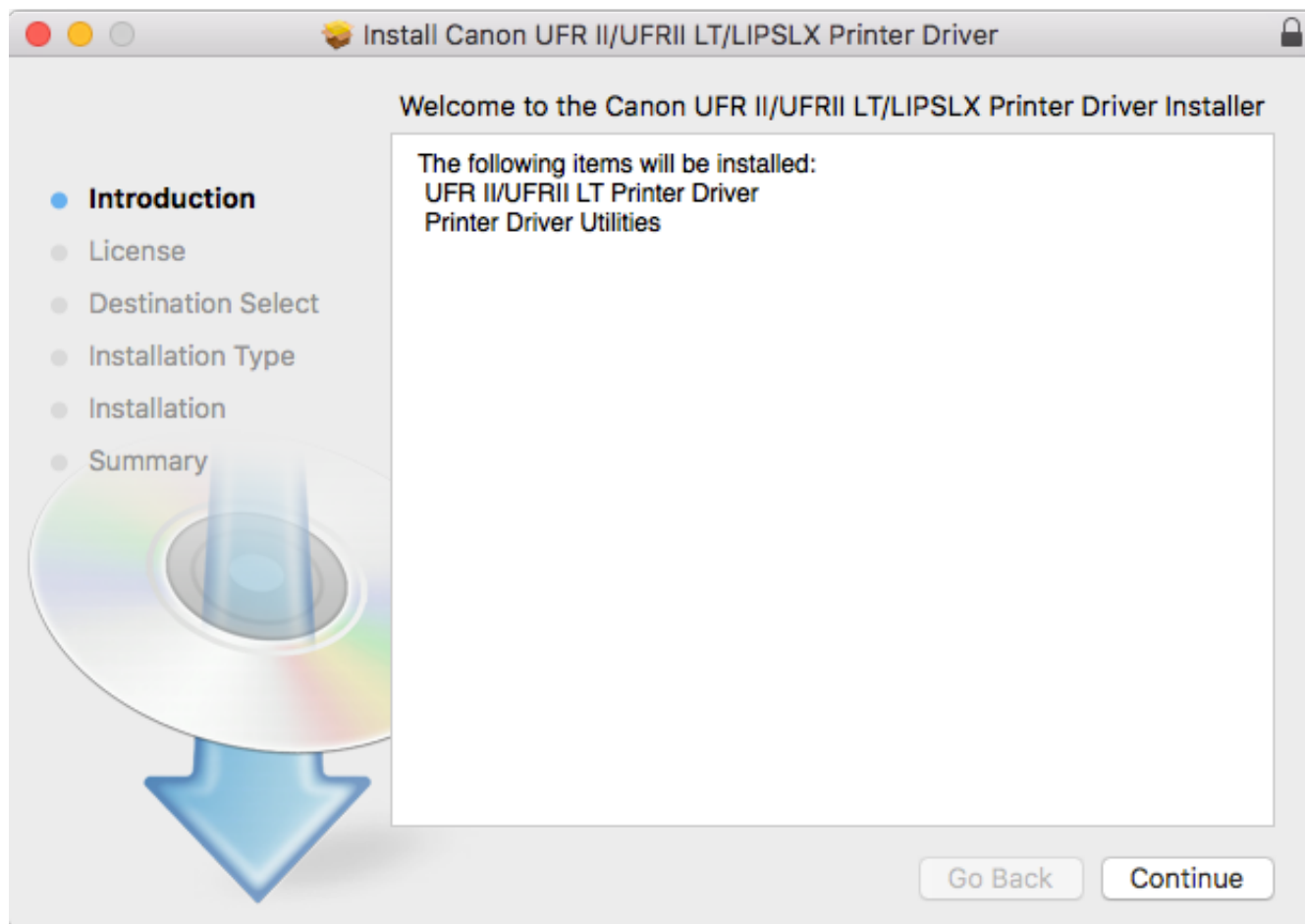
File version	V10.13.1		
Release date	04 September 2017		
Operating system(s)	macOS 10.12 OS X 10.9	OS X 10.11 OS X 10.8	OS X 10.10 Mac OS X 10.7
Language(s)	English Italiano Türkçe 繁體中文	Français Deutsch 日本語 简体中文	Español Nederlands □□□

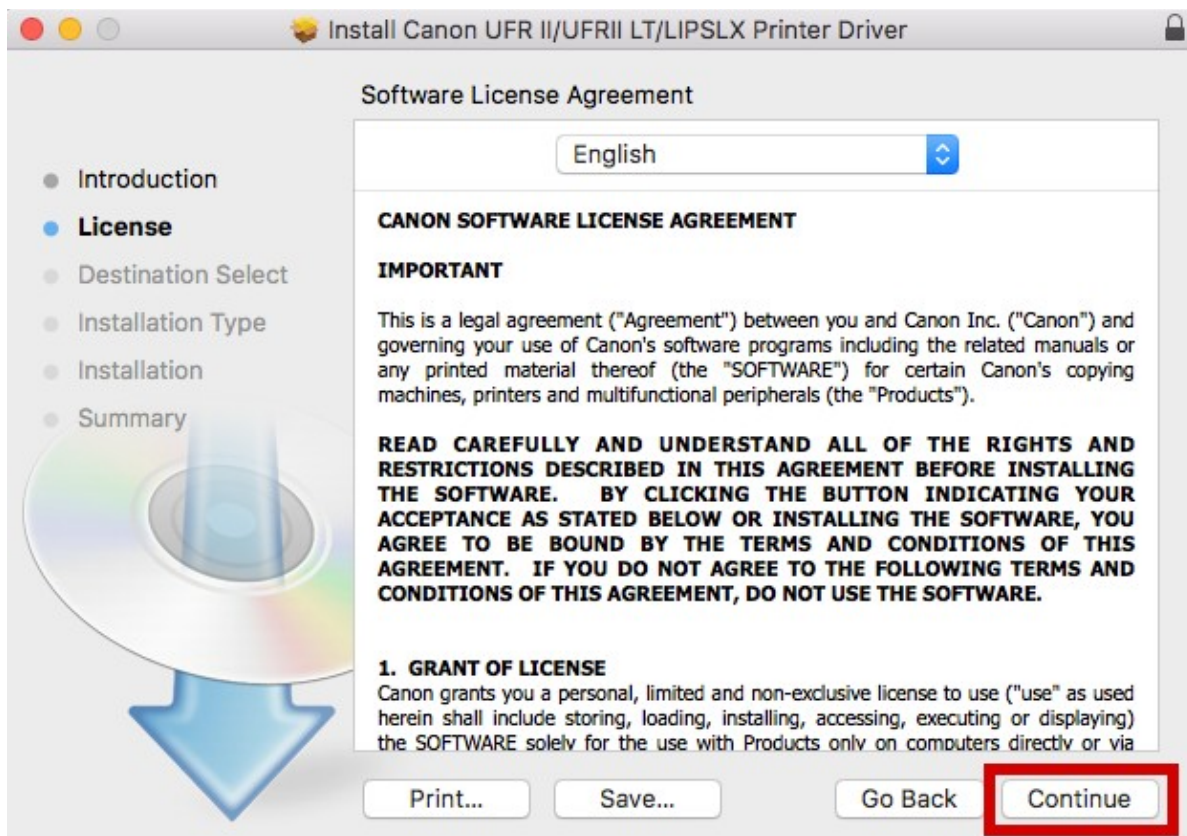
[More details](#) [Email link](#) [Download](#)

Execute o arquivo baixado e em seguida dê dois cliques no pacote do driver.

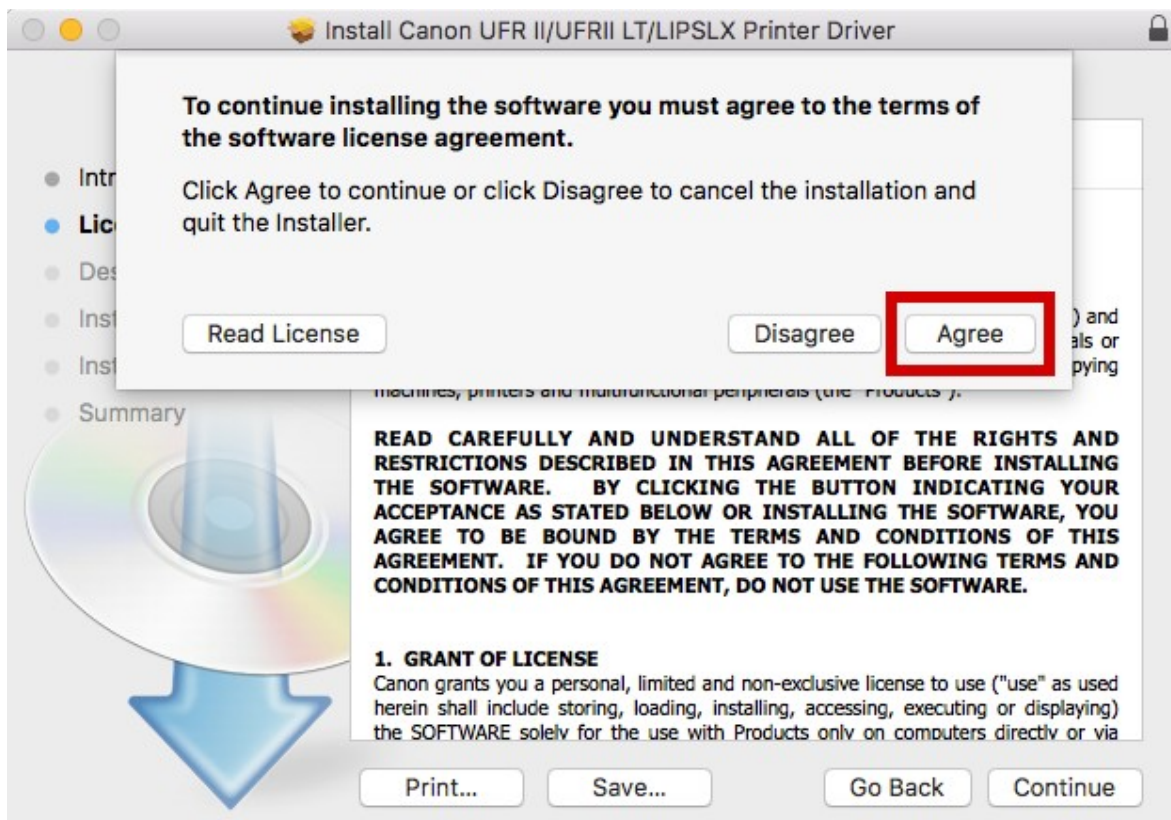


Siga as instruções de instalação.

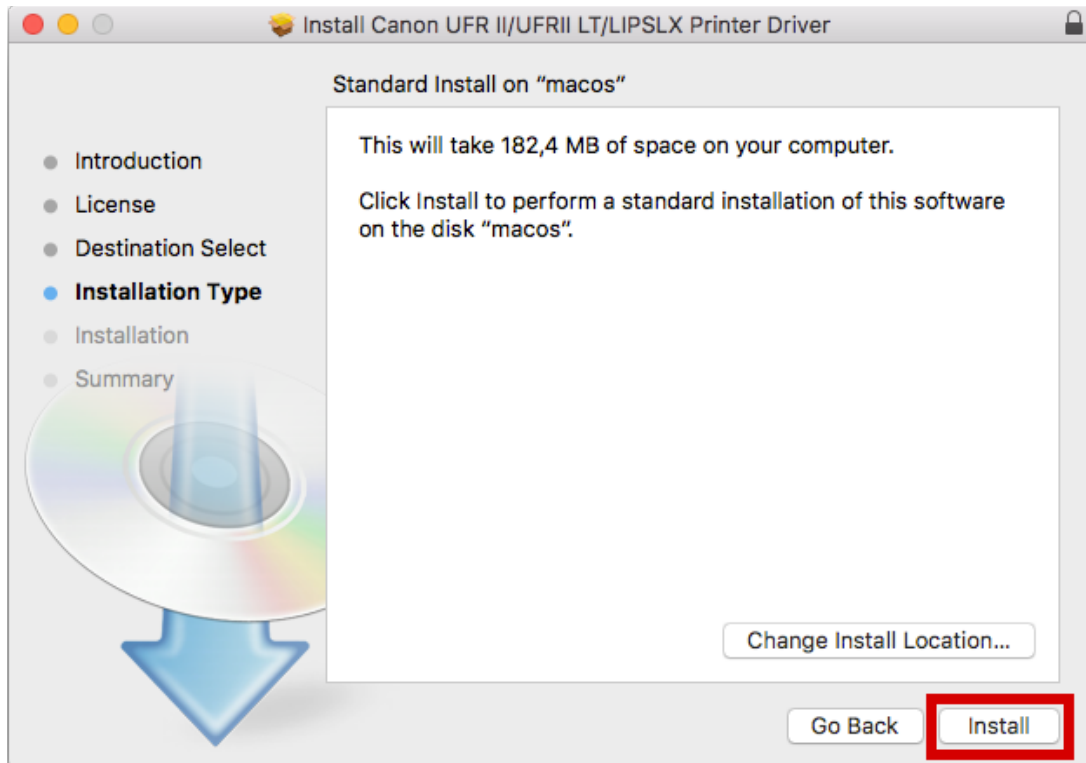




Aceite o termo da licença.

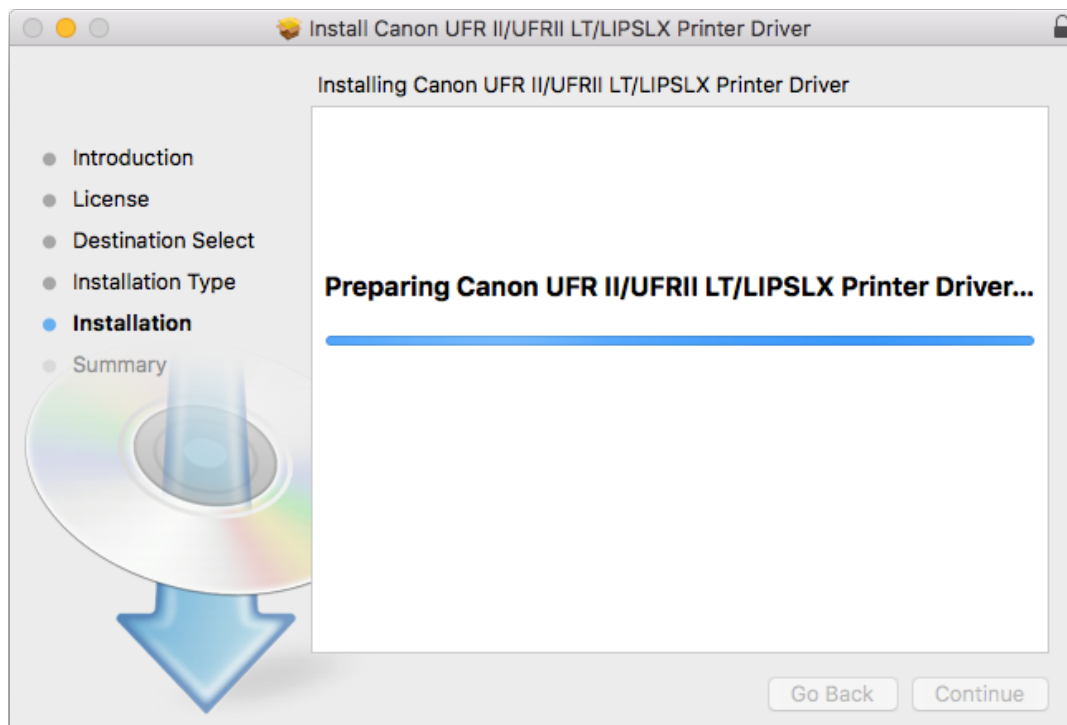


Clique em "Install".

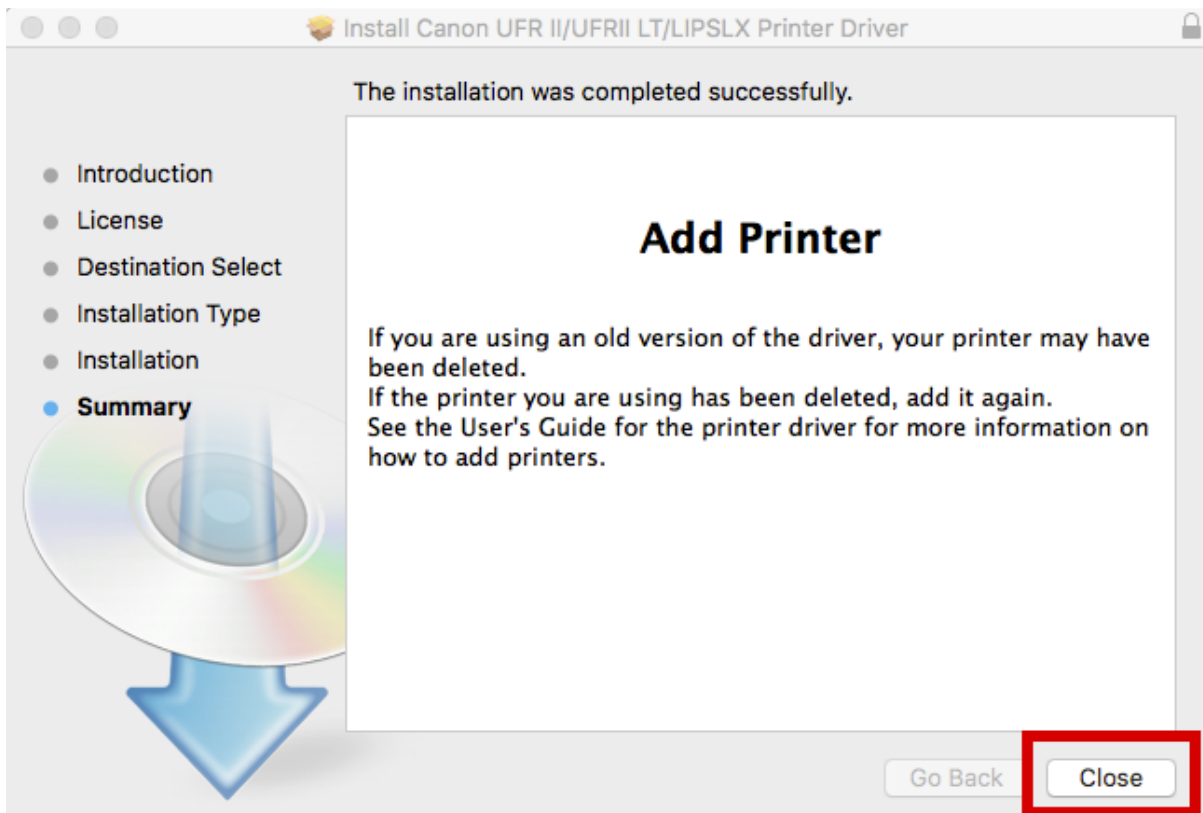


Caso abra uma janela pedindo autenticação, entre com o usuário e senha do administrador do computador.

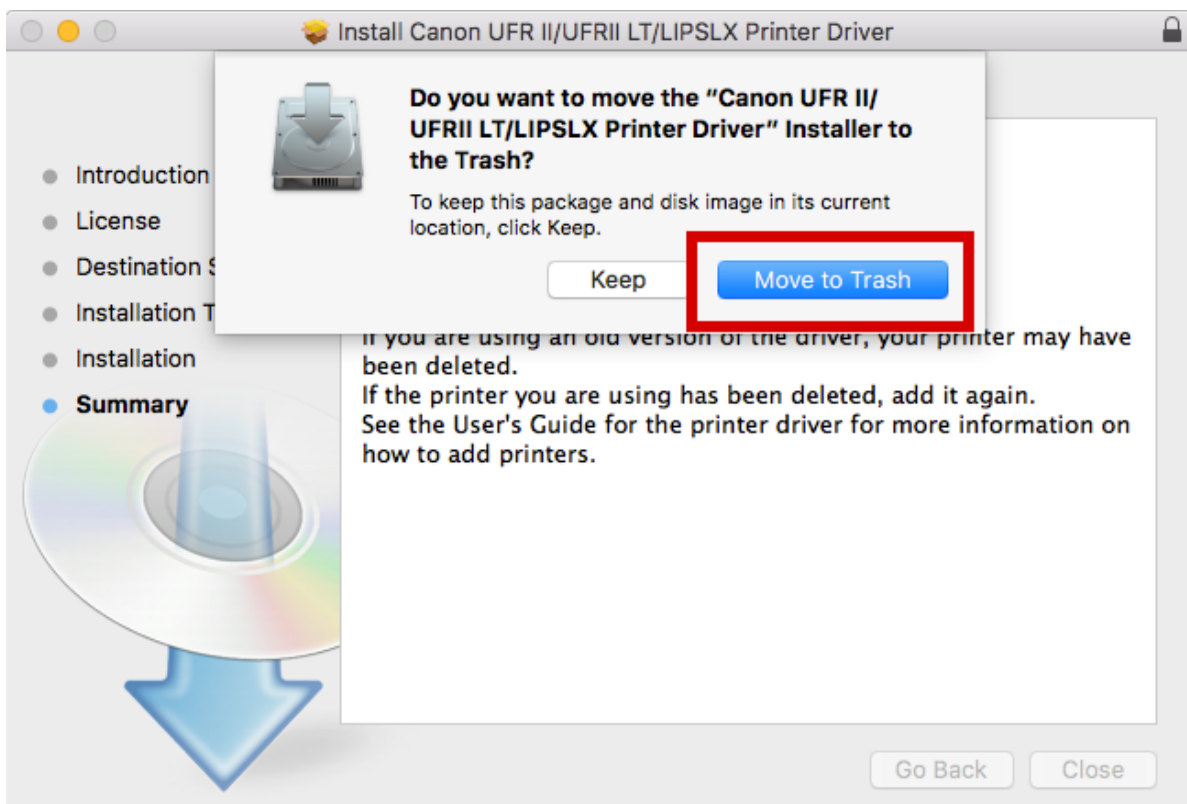
Aguarde alguns segundos enquanto a instalação é efetuada.



Finalize a instalação do driver.

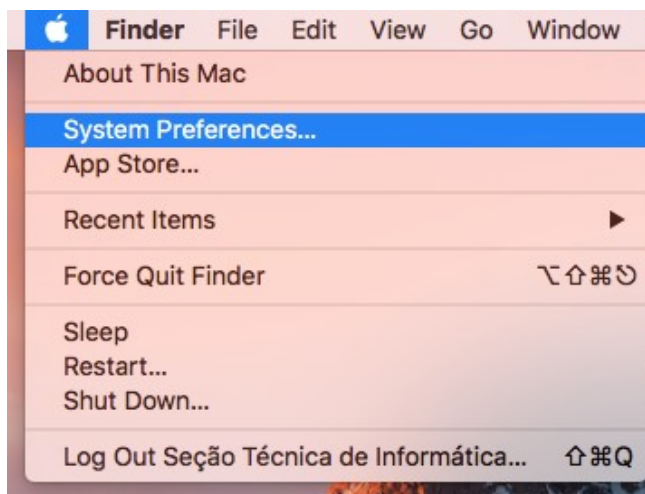


Clique em "Move to Trash", pois o pacote com o driver não será mais utilizado.

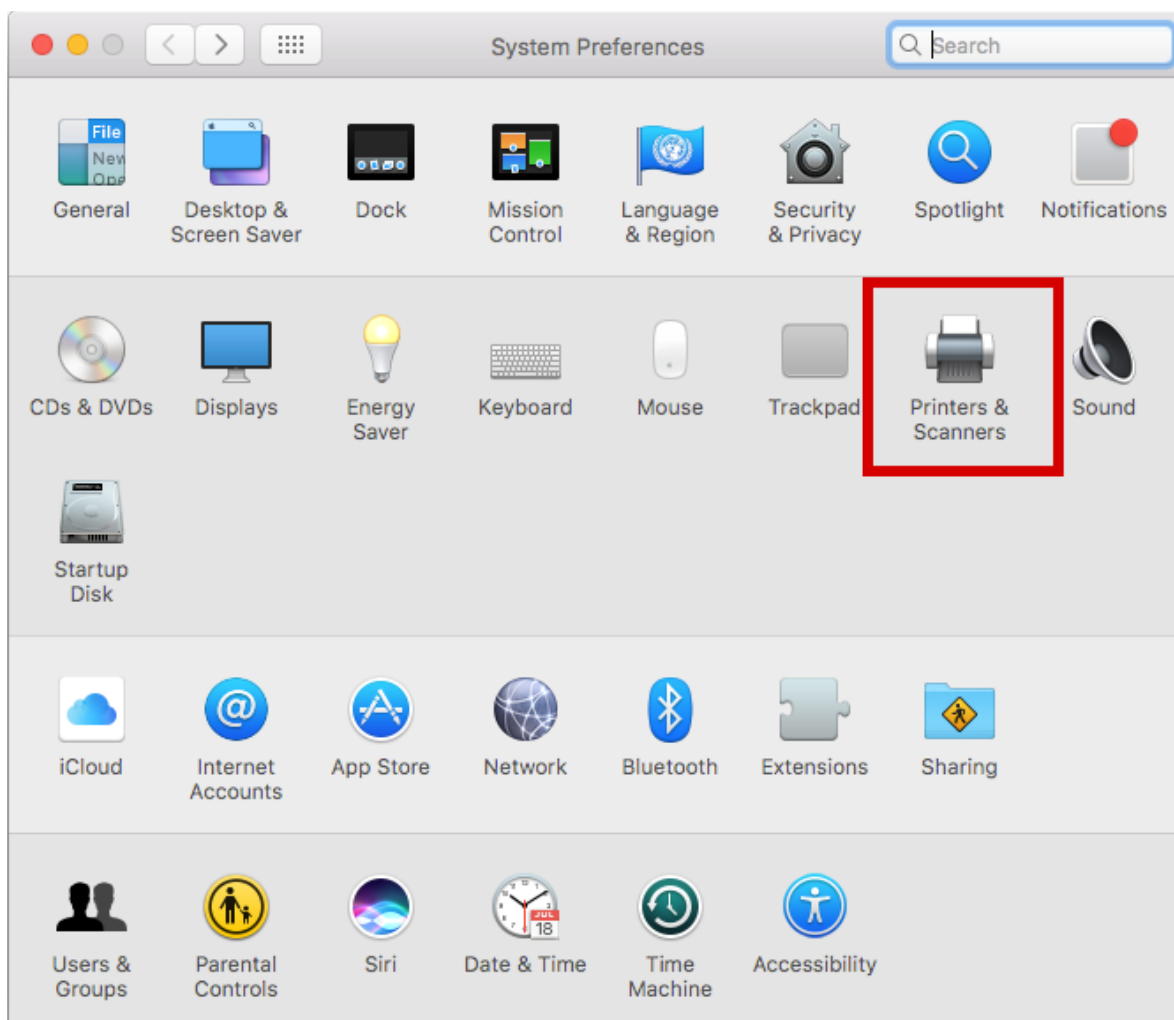


Com o driver instalado agora é preciso configurar a impressora.

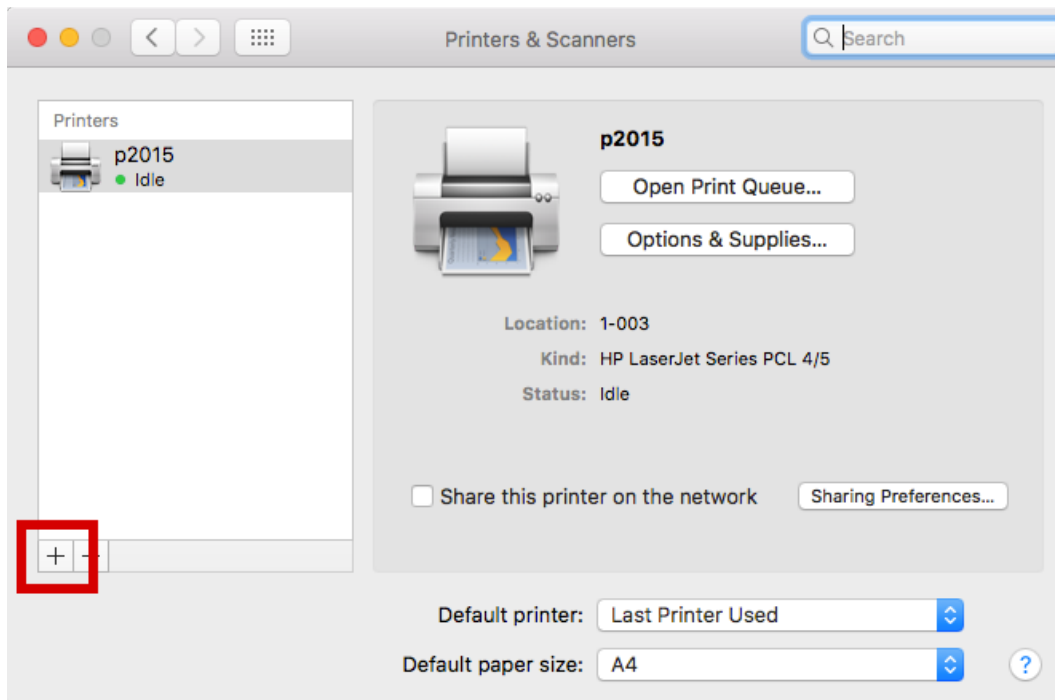
Clique no ícone da maçã do canto superior esquerdo da tela e seleccione “System Preferences...”.



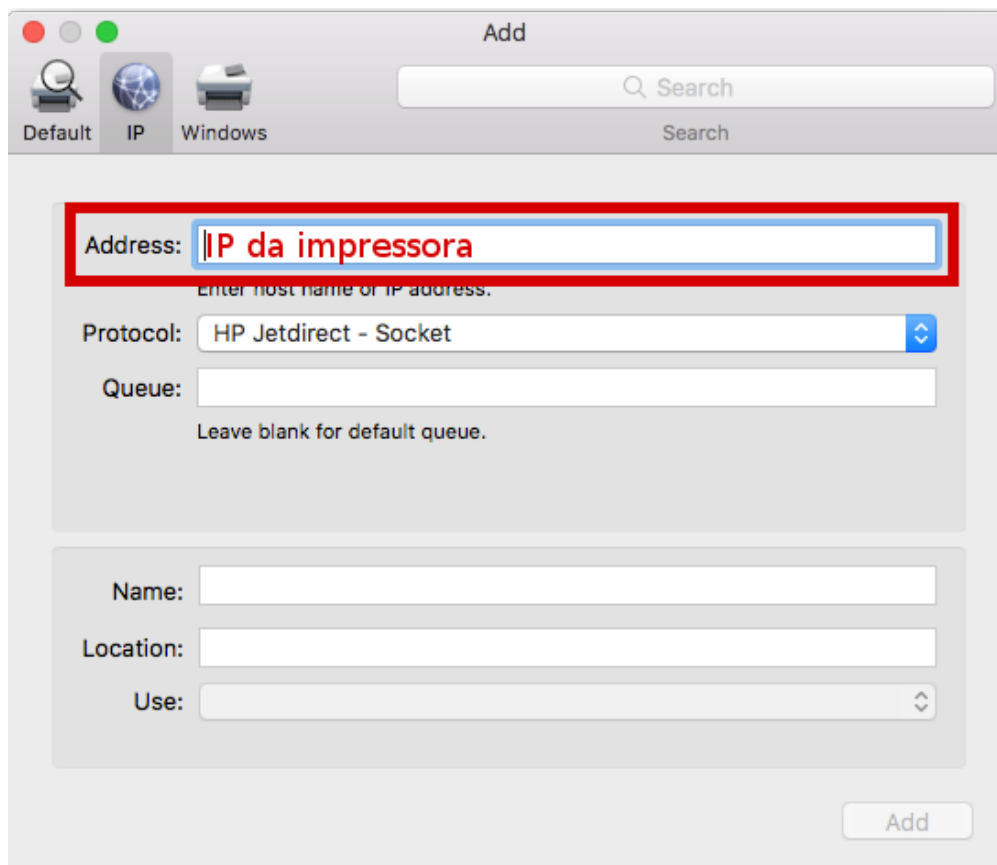
Selecione a opção “Printers & Scanners”.



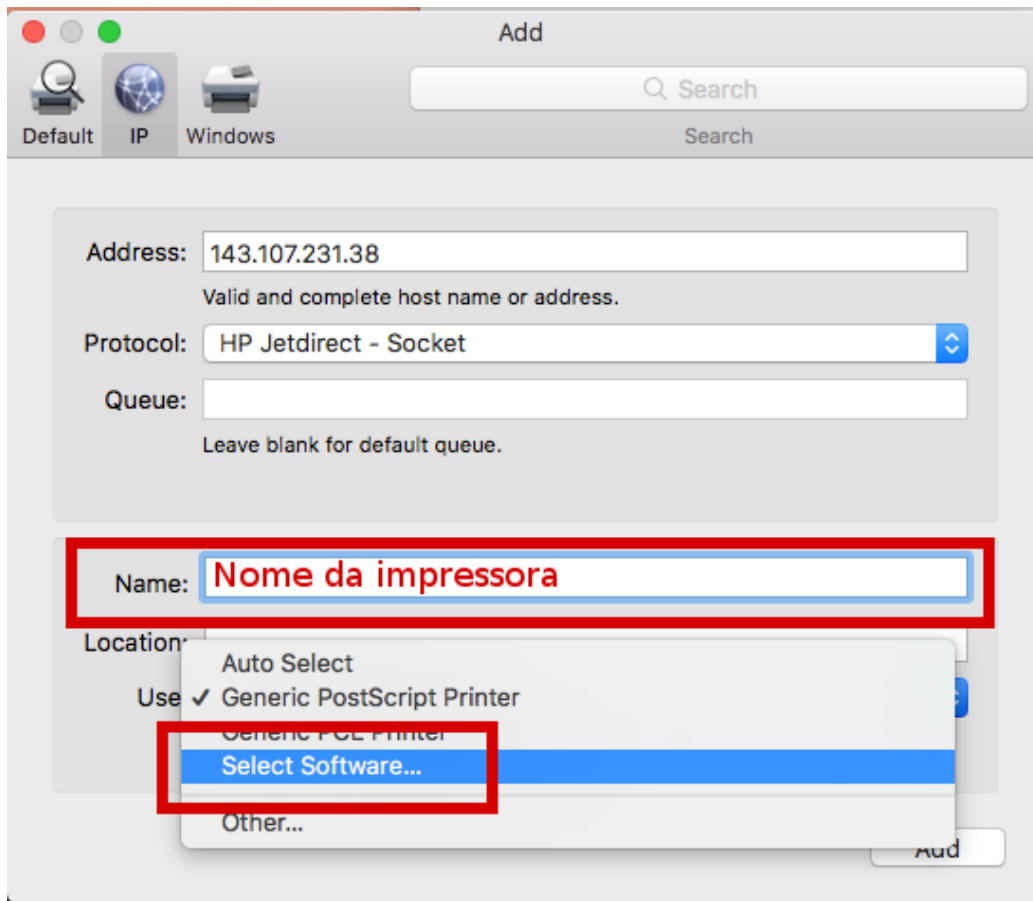
Clique no ícone de “+” para adicionar uma nova impressora.



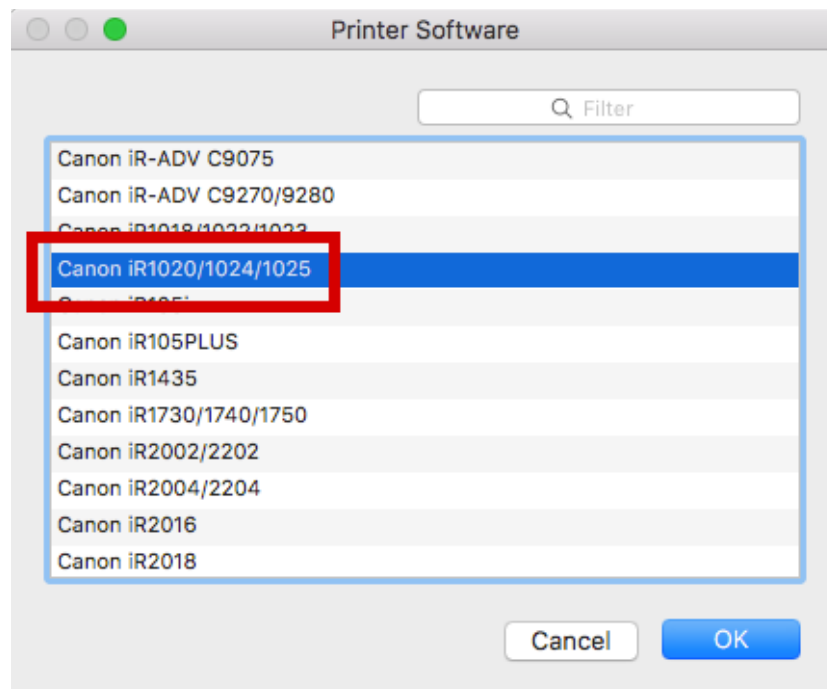
No campo “Address:” insira o IP da impressora que deseja instalar. Para verificar os IPs das impressoras, consulte o site da STI-ICMC (<http://www.icmc.usp.br/sti> em Serviços, Impressões).



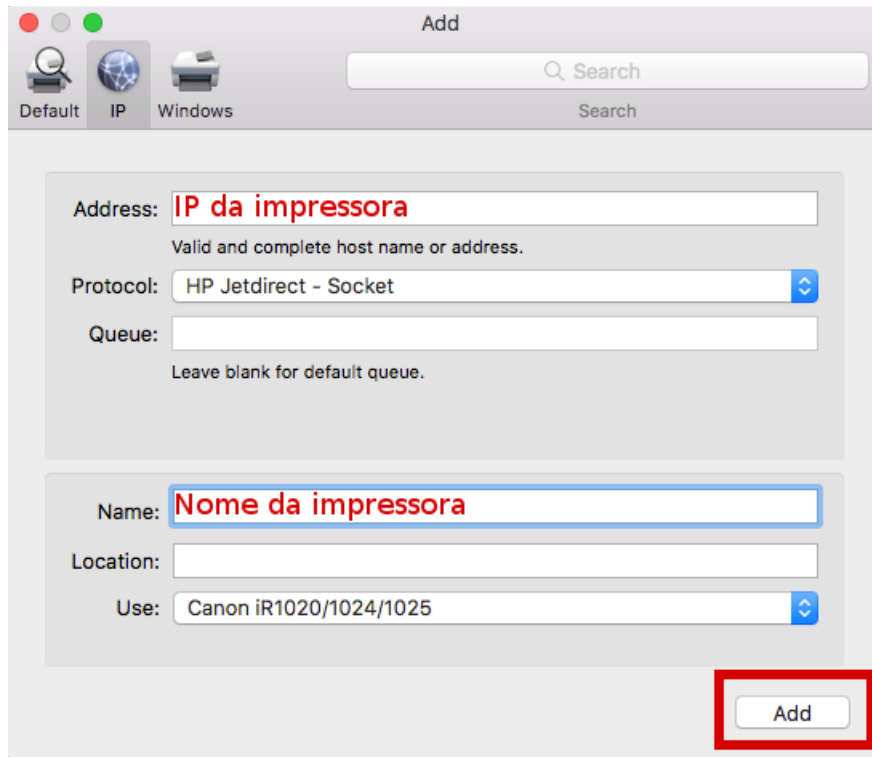
No campo "Name:" insira o nome da impressora e no campo "Use:" selecione "Select Software...".



Selecione o driver "Canon iR1020/1024/1025".

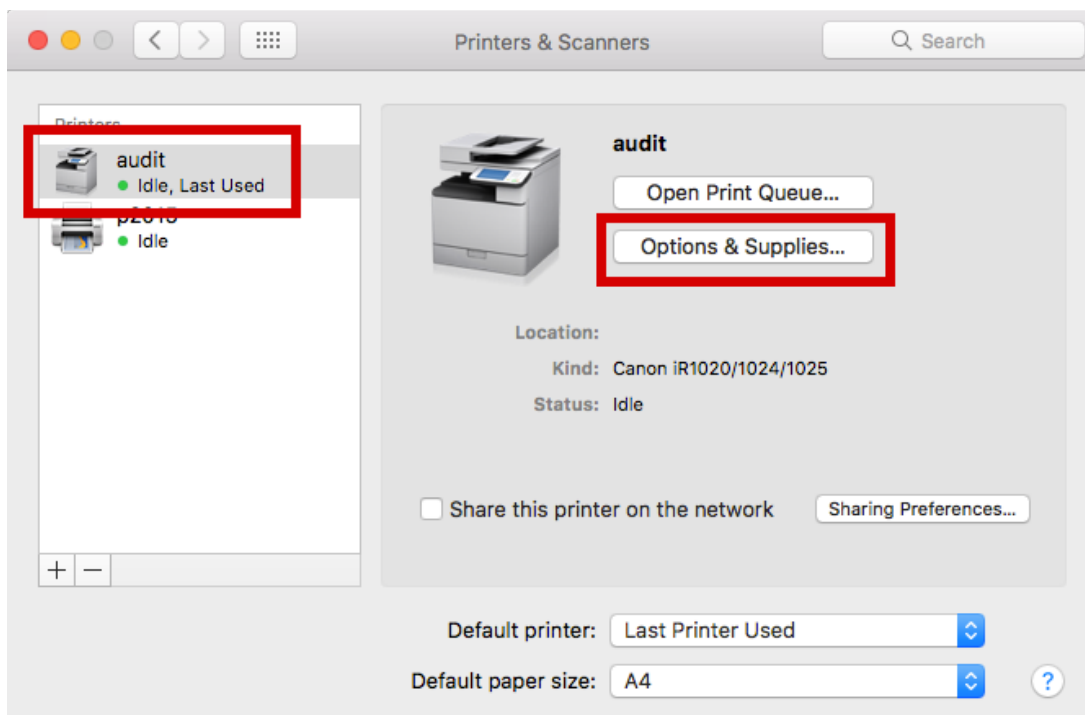


Verifique se as informações foram inseridas corretamente e clique no botão “Add”.

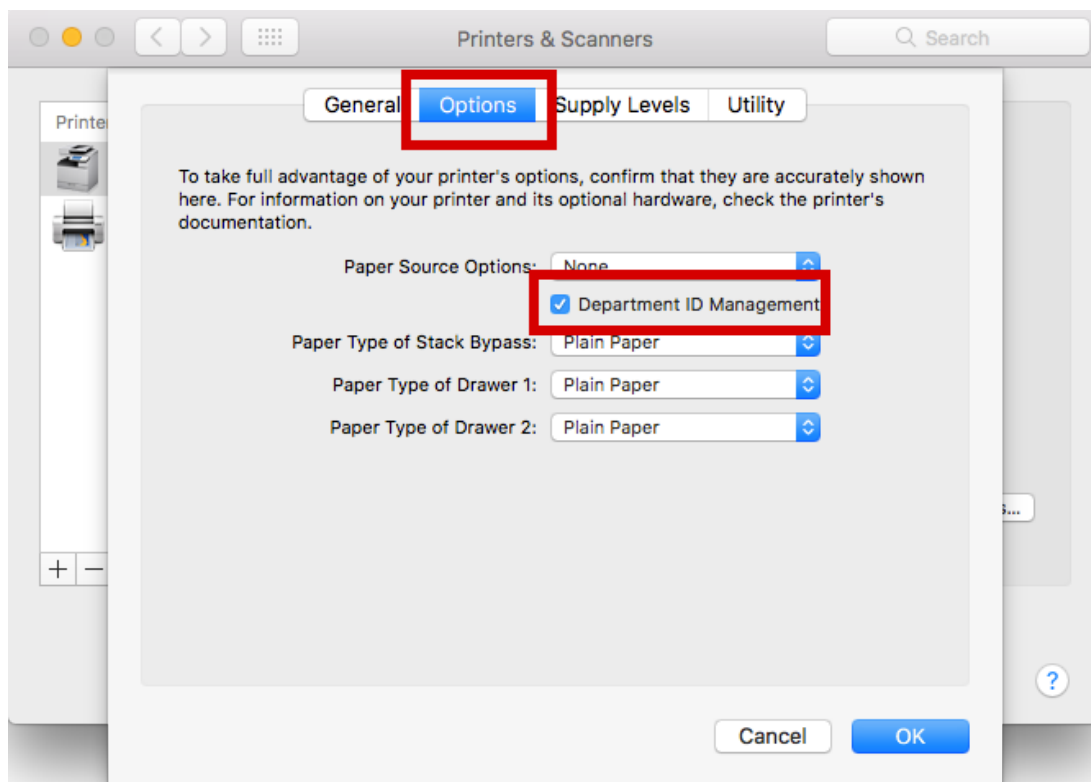


Com a impressora instalada, agora é preciso configurar o ID e a senha. **Caso não tenha essas informações solicite seu acesso para a gráfica do ICMC.**

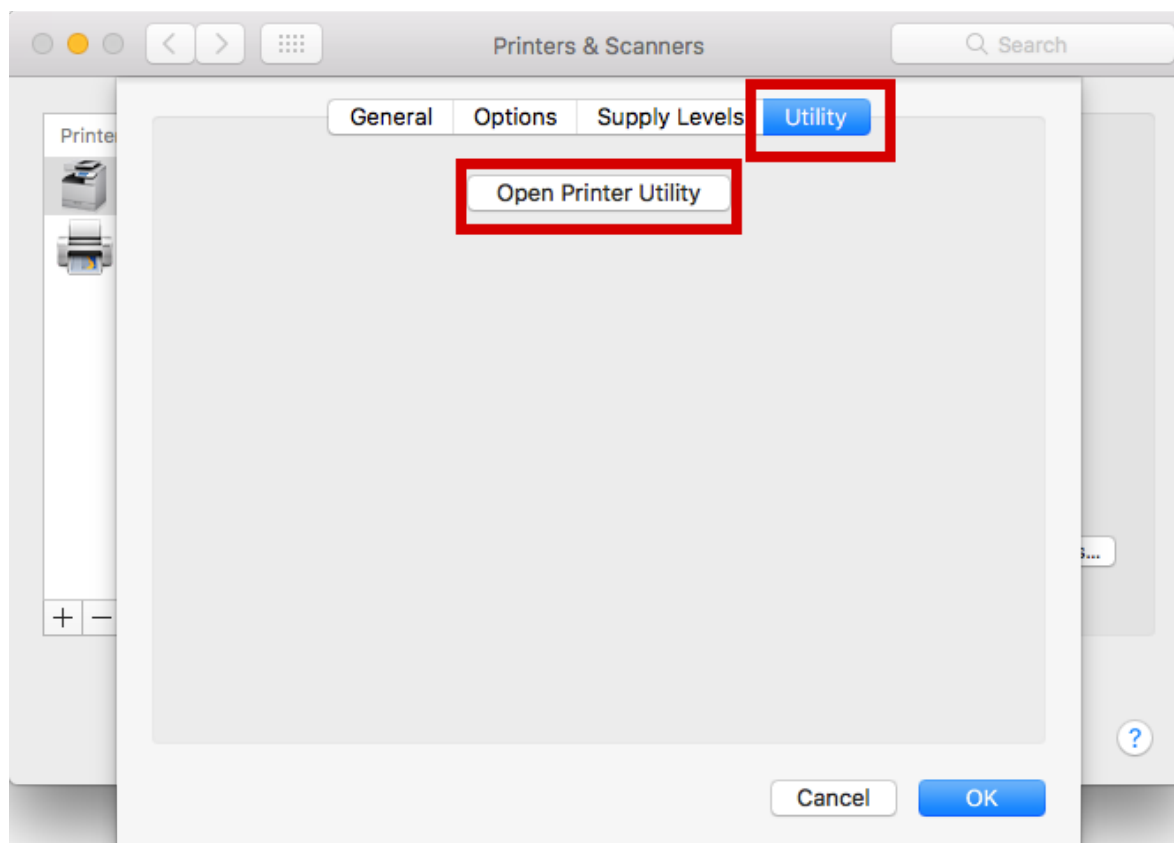
Na tela de “Printers & Scanners” selecione a impressora instalada e clique do botão “Options & Supplies...”.



Na aba “Options” selecione “Department ID Management”.



Depois, na aba “Utility” clique no botão “Open Printer Utility”.



Na aba “Department ID Management” selecione a opção “Use Department ID Management”, no campo “Department ID:” insira seu ID e no campo “PIN:” insira sua senha. Clique em “Save Settings”.

Printer Name: audit
Kind: Canon iR1020/1024/1025
Printer Information
Remote UI

Department ID Management User Information Store Destination

Use Department ID Management

Department ID: ID
PIN: Senha
Verify

Confirm Department ID/PIN When Printing
 Do Not Use Department ID Management When B&W Printing

Save Settings

Obs.: as impressoras Canon IR1025 apenas imprimem no formato A4.